



Water Blueprint – a Sustainable Watershed for All



Iris Tebeka

Leading the Blueprint 2025 Sustainability Strategy Team

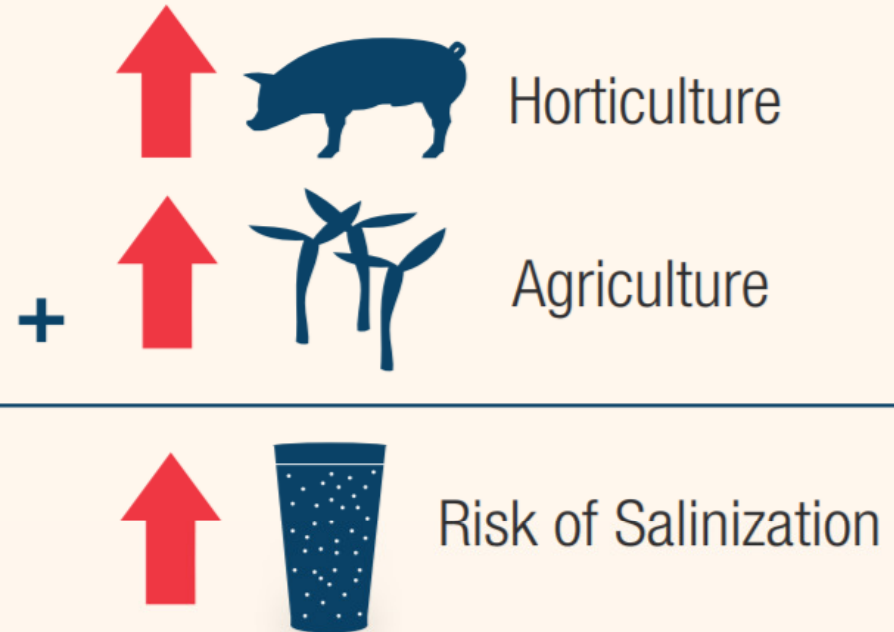


The problem

Terneuzen,
Netherlands



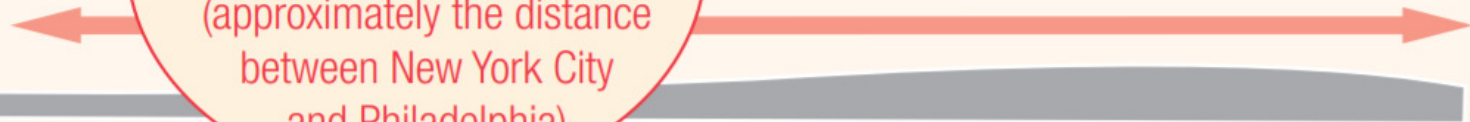
FRESHWATER
scarce
REGION



TRANSPORT WATER OVER

120 km

(approximately the distance
between New York City
and Philadelphia)



Collaborative solution

DOW

City of
Terneuzen

Evides
Water Co.

Municipal
Water Board
Scheldestromen



↓ CO₂ emissions
60,000 tons/year



↓ Cost
↓ Energy
95% reduction

THE GOAL



END BY YEAR
2020



2025 Sustainability Goal: Collaborating for Blueprints



[WATER - NEW](#)

[WORKFORCE - COMING SOON](#)

[ENERGY & CLIMATE - COMING SOON](#)

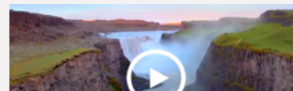
[SUSTAINABLE CITIES - COMING SOON](#)

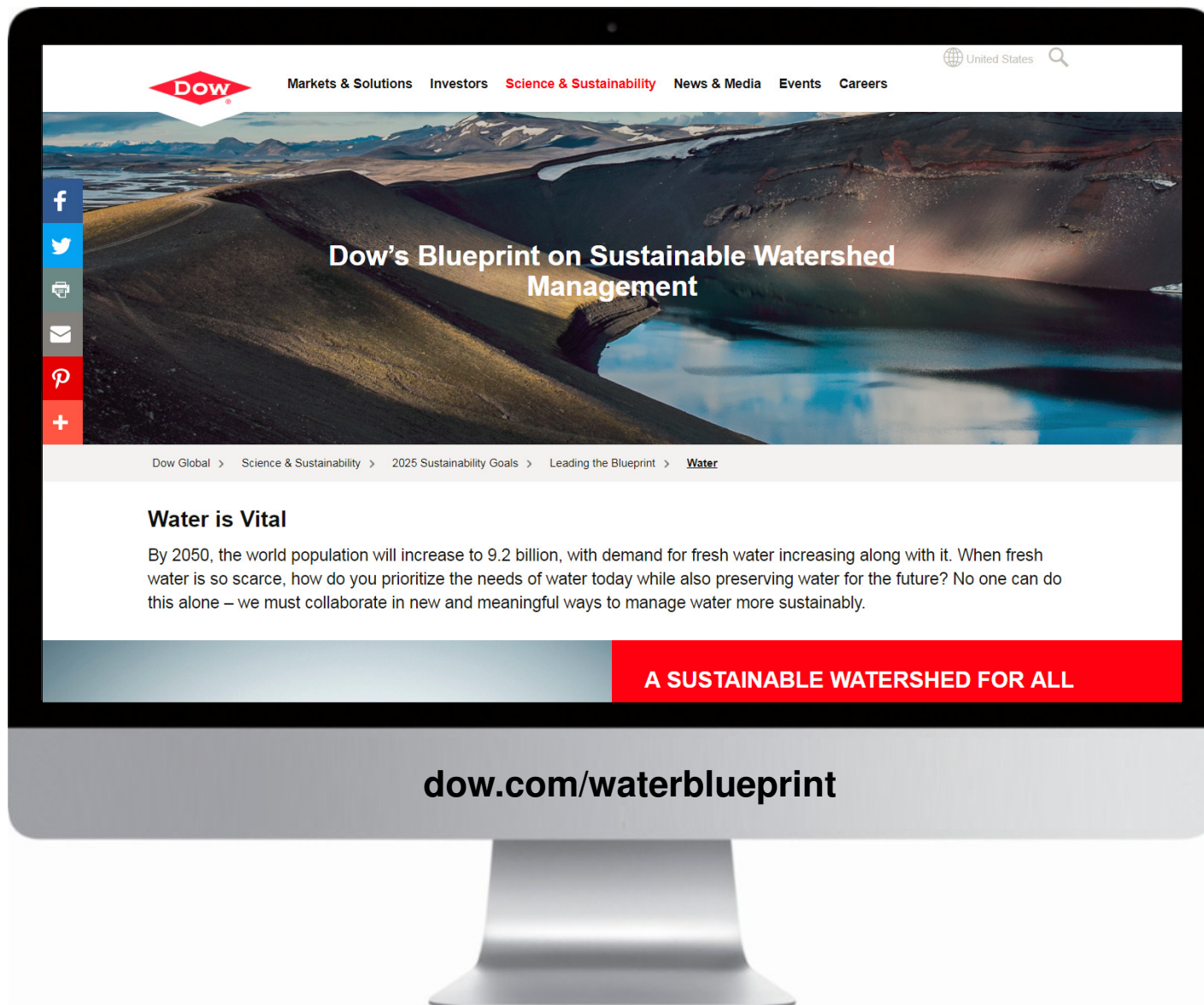
[RESOURCE EFFICIENCY - COMING SOON](#)

[Dow Global](#) > [Science & Sustainability](#) > [2025 Sustainability Goals](#) > [Leading the Blueprint](#)

We will lead in developing societal blueprints that integrate public policy solutions, science and technology, and value chain innovation to facilitate the transition to a sustainable planet and society.

Related Videos





[Markets & Solutions](#) [Investors](#) [Science & Sustainability](#) [News & Media](#) [Events](#) [Careers](#)

 [United States](#) 



Dow's Blueprint on Sustainable Watershed Management

[Dow Global](#) > [Science & Sustainability](#) > [2025 Sustainability Goals](#) > [Leading the Blueprint](#) > [Water](#)

Water is Vital

By 2050, the world population will increase to 9.2 billion, with demand for fresh water increasing along with it. When fresh water is so scarce, how do you prioritize the needs of water today while also preserving water for the future? No one can do this alone – we must collaborate in new and meaningful ways to manage water more sustainably.

A SUSTAINABLE WATERSHED FOR ALL

dow.com/waterblueprint



Join us!

Iris R. Maia Tebeka
MaiaTebeka@dow.com