



**INSTITUTO SENAI**  
DE INOVAÇÃO

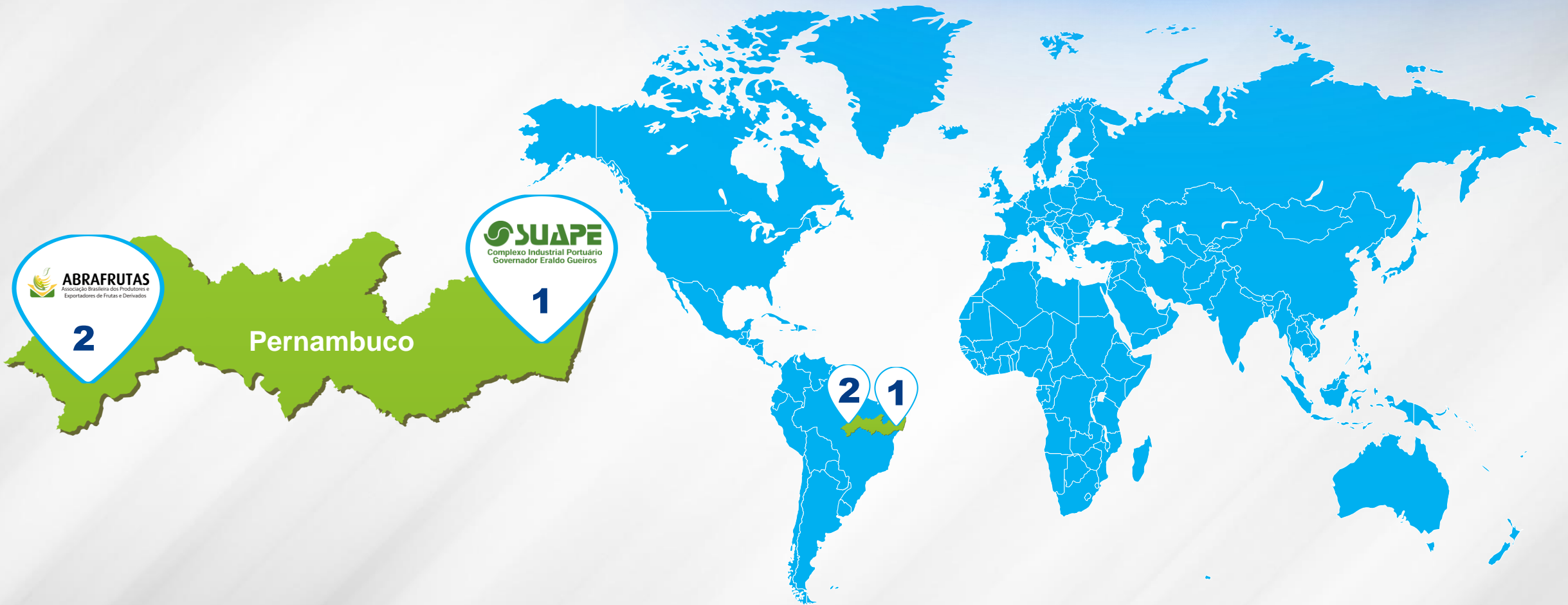
TECNOLOGIAS DA INFORMAÇÃO

JOINING  
KNOWLEDGE AND  
INNOVATION FOR  
**INDUSTRIAL  
COMPETITIVENESS**

**SENAI**

Serviço Nacional de Aprendizagem Industrial  
PELO FUTURO DO TRABALHO

# SENAI Industrial Innovation Clusters



**ABRAFRUTAS**  
Associação Brasileira dos Produtores e Exportadores de Frutas e Derivados

**2**

Pernambuco

**SUAPE**  
Complexo Industrial Portuário  
Governador Eraldo Gueiros

**1**

## SUAPE



**1** Energy Transition,  
Advanced Manufacturing  
and Logistics

## Petrolina



**2** Industrial Technology  
for Agribusiness



# SENAI Industrial Innovation Clusters

Privileged Location

**SUAPE**  
Complexo Industrial Portuário  
Governador Erlando Gueiros

**INSTITUTO SENAI**  
DE INOVAÇÃO  
TECNOLOGIAS DA INFORMAÇÃO



- 5 days from **PANAMA CANAL**
- 5 days from **LAS PALMAS - SPAIN**
- 7 days from **NEW YORK - USA**
- 9 days from **ROTTERDAM - HOLLAND**
- 10 days from **VALENCIA - SPAIN**



Established **44** years ago, with an **industrial port** concept



**5<sup>th</sup>** place among **Brazilian public ports**

**24.7** million tonnes of freight in **2022**



**National leader** in bulk liquids and gases (**17.8 million tonnes**) and coastal shipping (**16.4 million tonnes**)

**Largest hub** for **containers** and vehicles in North and Northeast Brazil

**Main cargo types:** fuels, crude oil, container freight, cereals, sacked sugar, machinery and equipment, vehicles etc.



## 220 COMPANIES

in operation in Suape

- FOOD AND BEVERAGE
- WIND POWER COMPONENTS
- BUILDING MATERIALS
- PETROCHEMICALS

## R\$ 74.5 BILLION

in private investment

- POWER GENERATION
- LIQUIDS AND GASES
- LOGISTICS
- SHIPBUILDING AND OFFSHORE

## 40 THOUSAND

direct jobs

- PHARMACEUTICALS
- PRE-FORM PET AND PLASTICS
- METALWORKING



# SENAI Industrial Innovation Clusters

Energy Transition, Advanced Manufacturing and Logistics



## Currently

Industrial Port Zone
Industrial Zone
Services Zone
Environmental Preservation Zone
Cultural Preservation Zone

Total Area 17,300 hectares



## Development

<b>3</b> Innovation Railways	
Passenger Trains	Cargo Trains
Application of Sustainable Fuels	

<b>1</b> Innovation Cluster	
Pilot Plant	Applied Research
Specialized Services	Entrepreneurship
Advanced Training and Specialist	Networking

<b>2</b> Innovation Airport	
Business	Executive Transportation
High Value Cargo	Research and Development

<b>4</b> Smart Community	
Social Residences	Students Residence
Schools and Universities	Sustainable Mobility
Natural Parks	Hotels, Bars and Restaurants



# SENAI Industrial Innovation Clusters

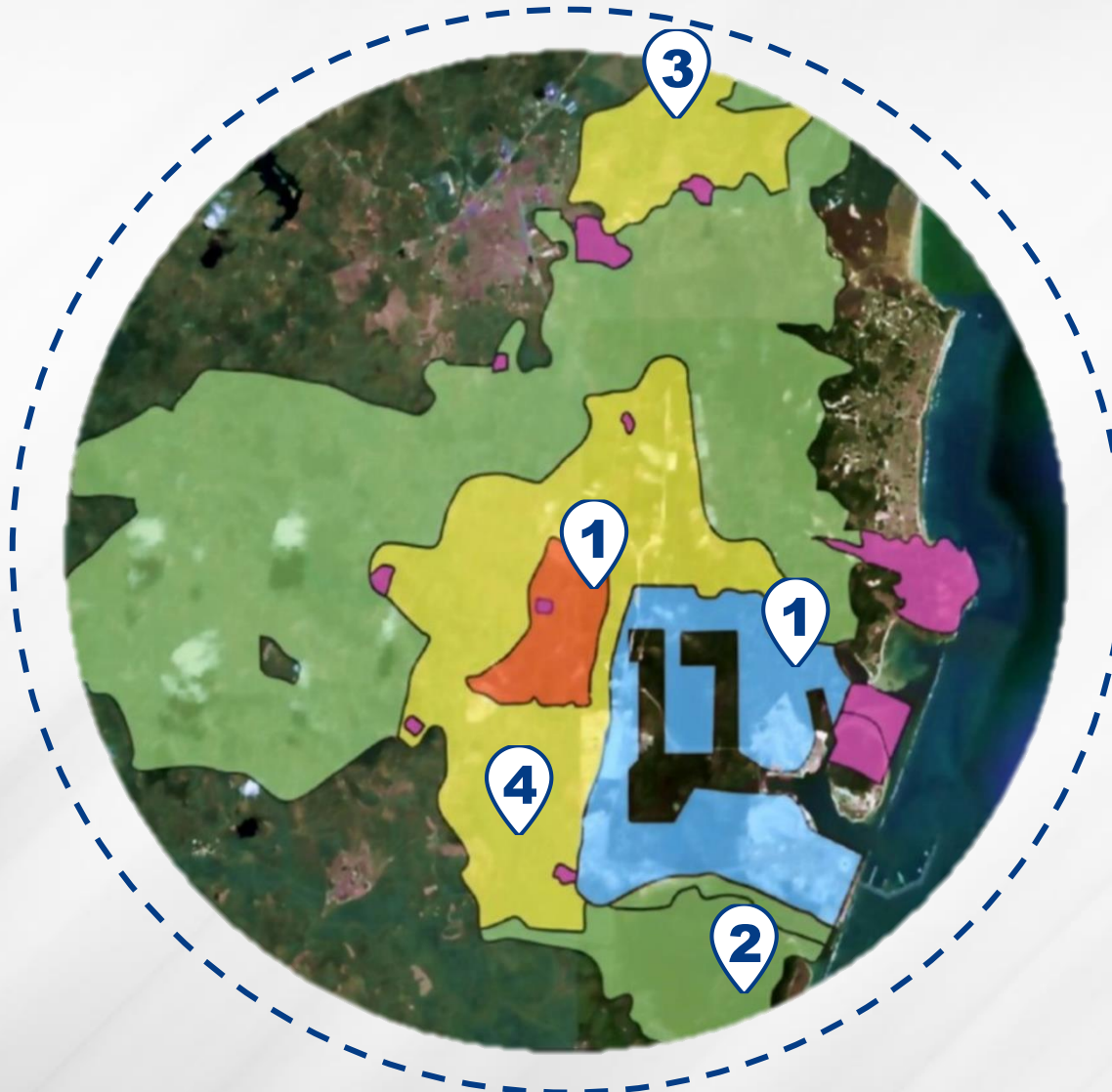
Energy Transition, Advanced Manufacturing and Logistics



## Currently

Industrial Port Zone
Industrial Zone
Services Zone
Environmental Preservation Zone
Cultural Preservation Zone

Total Area 17,300 hectares



## Development

3 Innovation Railways	
Passenger Trains	Cargo Trains
Application of Sustainable Fuels	

1 Innovation Cluster	
Pilot Plants	Applied Research
Specialized Services	Entrepreneurship
Advanced Training and Specialist	Networking

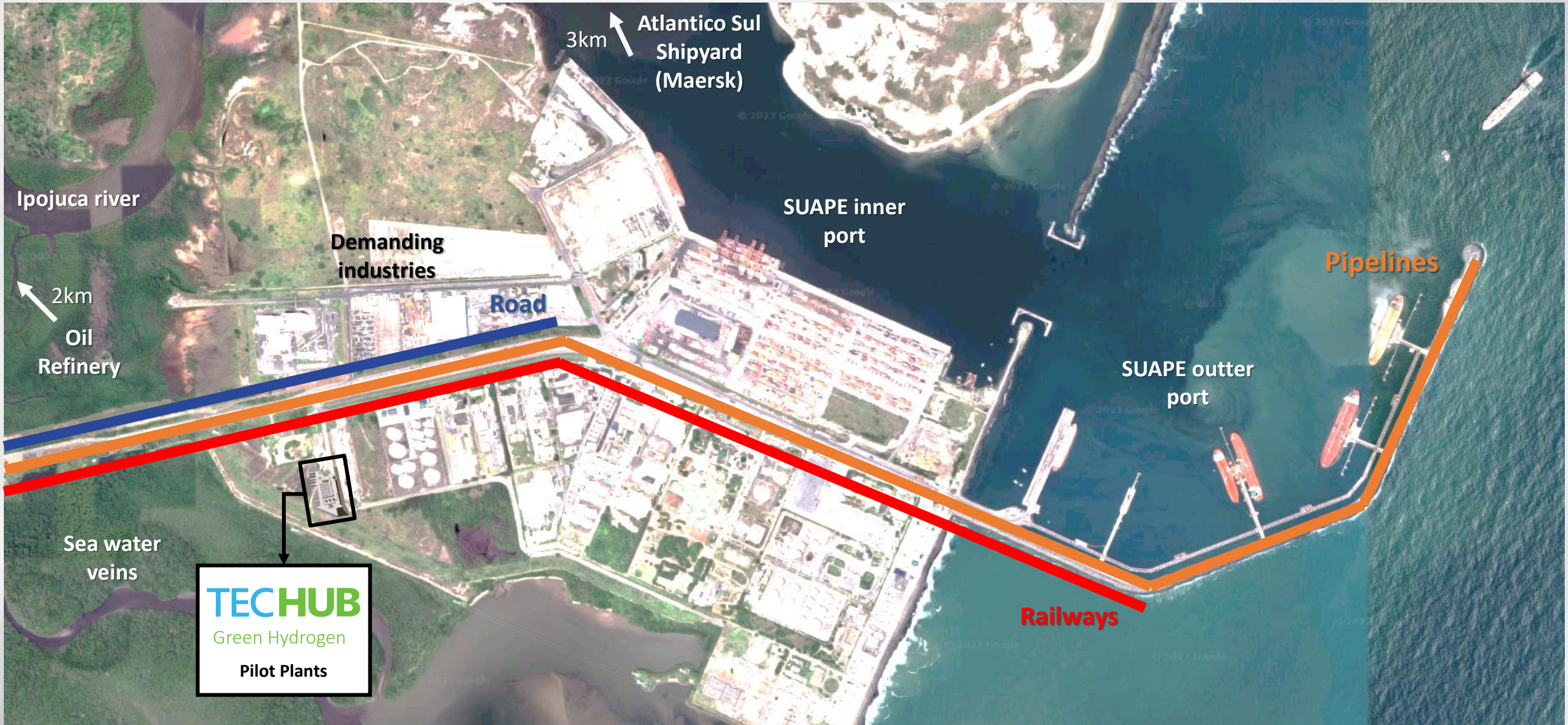
2 Innovation Airport	
Business	Executive Transportation
High Value Cargo	Research and Development

4

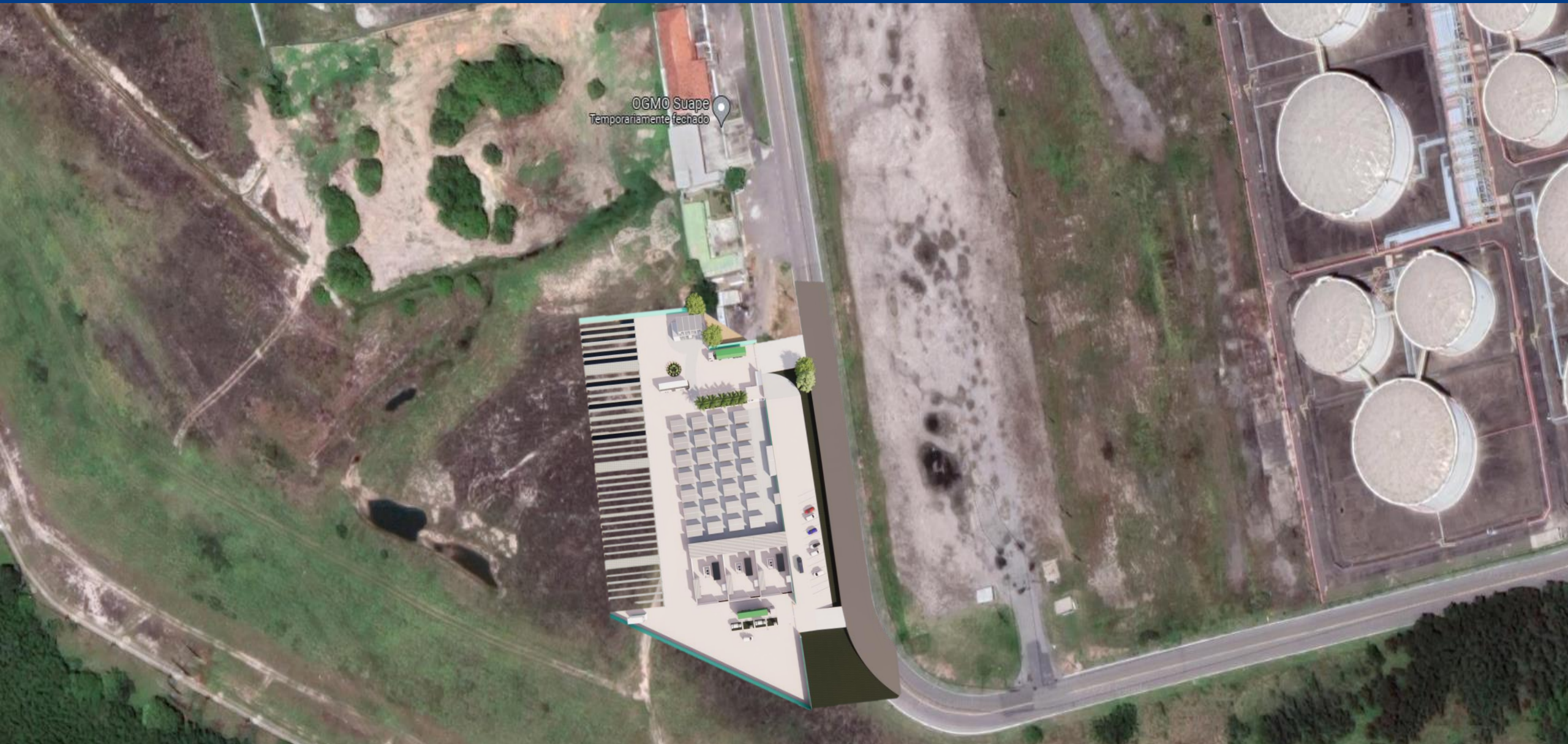
## Smart Community

Social Residences	Students Residence
Schools and Universities	Sustainable Mobility
Natural Parks	Hotels, Bars and Restaurants







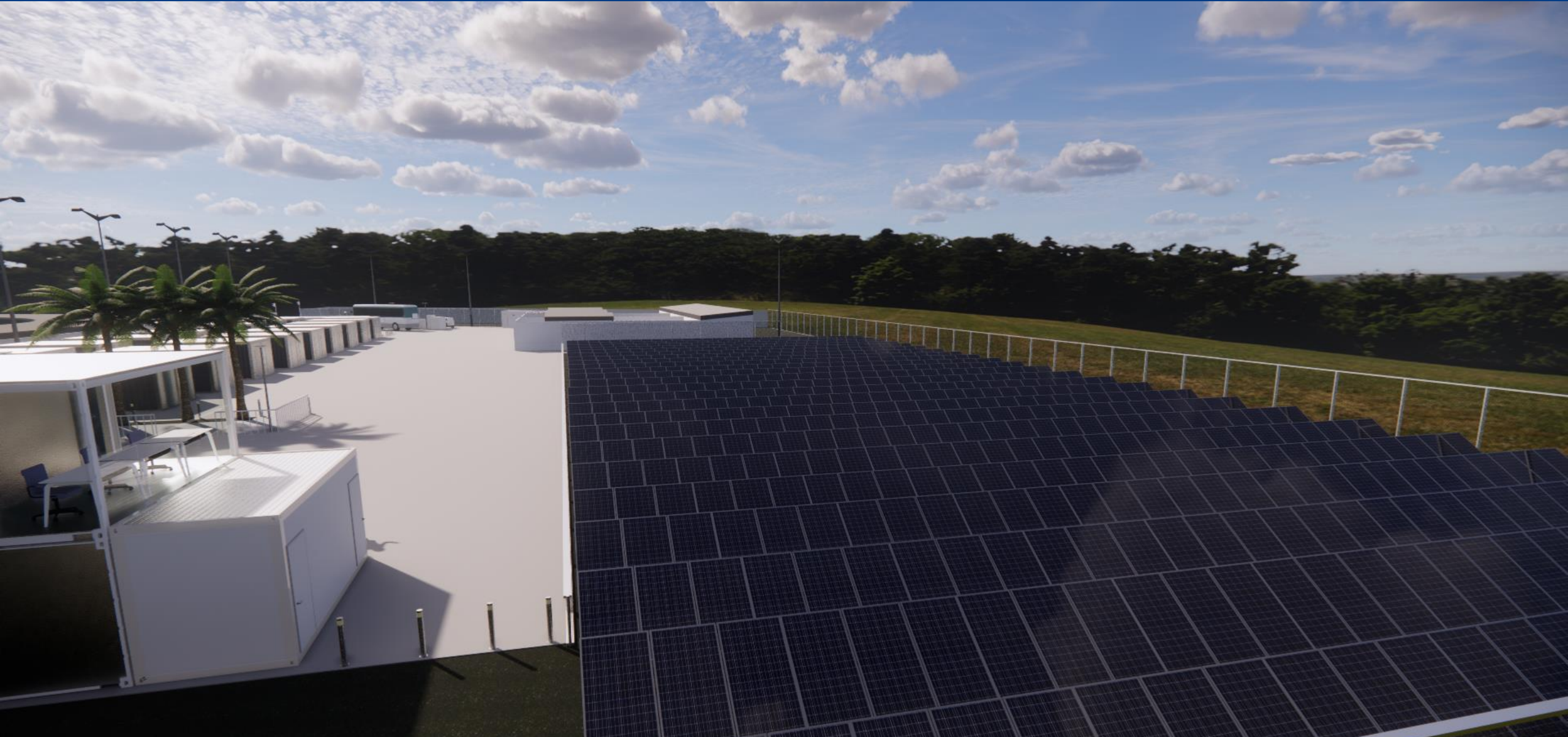


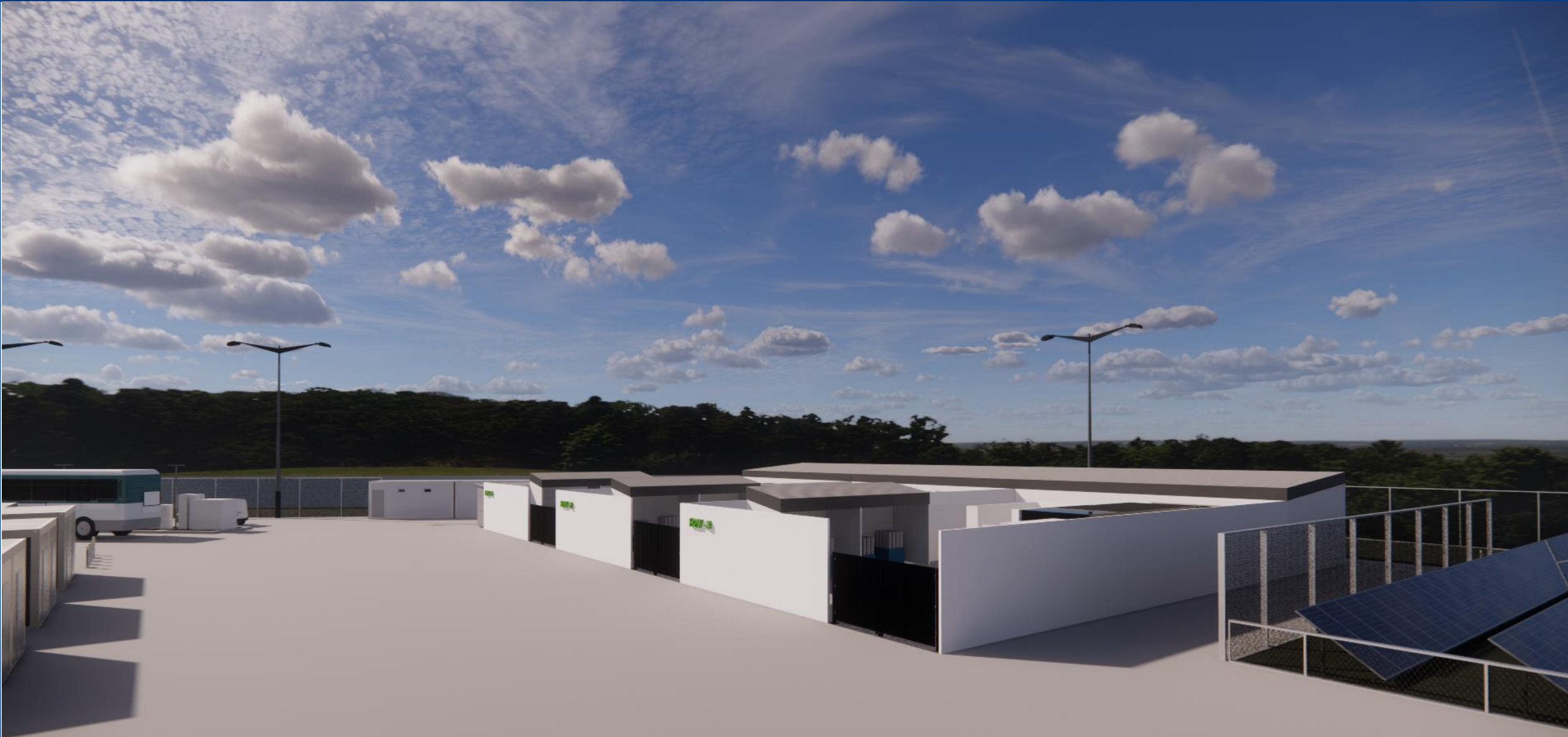




- Total area: - 1.033ha
- Solar power plants (room for): 450 kWp
- Pilot H2 plants (room for): 03 units
- Charging/Fueling docks: 02 units
- Parking lot for 12 cars
- Container-based laboratories: 38
- Administrative unit





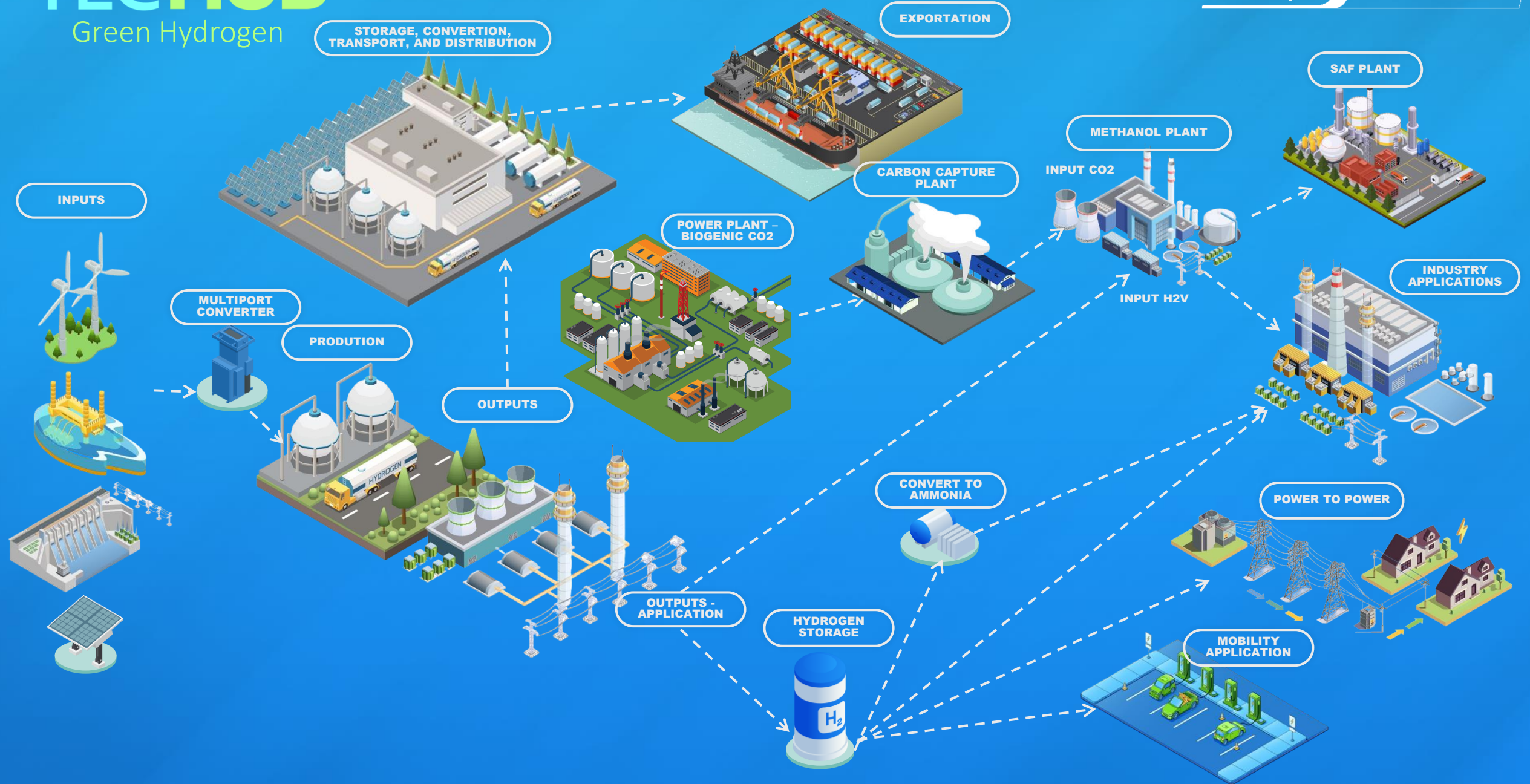


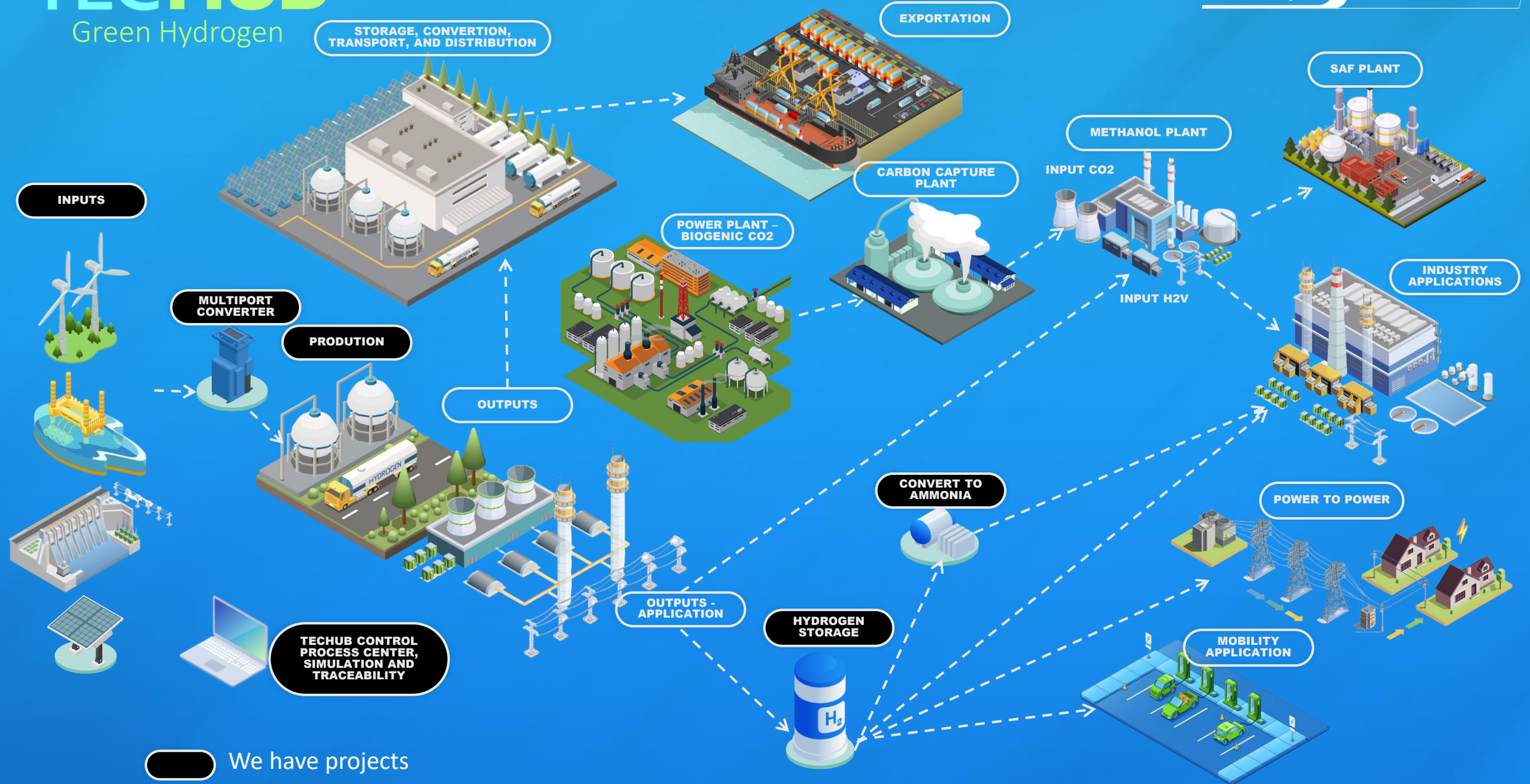












**We have projects**



1. **Joint venture** with Brazilian companies.
2. **Customized project finance schemes.**
3. **Joint research and development initiatives.**
4. **Technology transfer support** to explore the potential of hydrogen production in Brazil



**Come Join!**



**Presentation**



*Serviço Nacional de Aprendizagem Industrial*

**PELO FUTURO DO TRABALHO**