



HEALTH

ESG Social – Strategies for Occupational Safety, Health and Well-being

SESI

Brazilian Social Service for Industry

THE FUTURE OF WORKFORCE

HEALTH

It's possible to measure the impact of Workers health, safety and well-being on industry productivity.



- ✓ 124 K industrial workers answered the SESI assessment on the health factors that impact their productivity;
- ✓ Productivity Index Calculation (IPRO), adapted from the World Health Organization (WHO)*

*The World Health Organization Health and Work Performance Questionnaire (HPQ)

Productivity Loss related factors



Lack of will to go to work



Difficulty concentrating



Lack of disposition or energy



Health related absence



Pain or discomfort while executing
tasks



Results

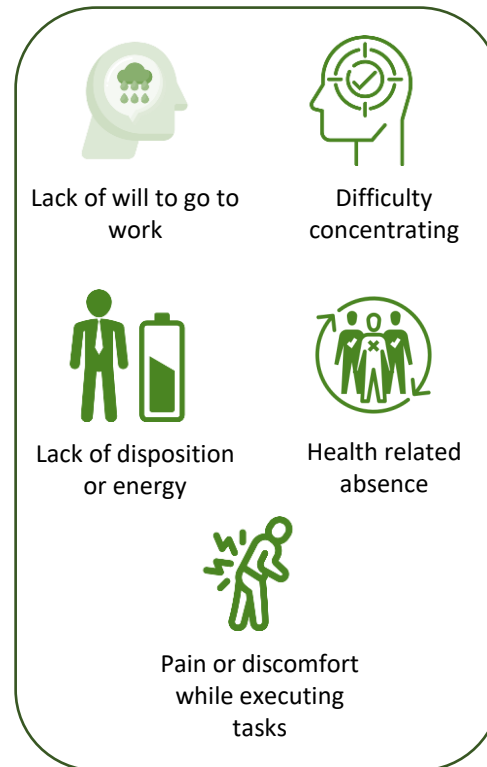
Health programs that contribute to increase productivity



High stress level increases up to 4 times the chance to

Dissatisfaction with work conditions increases up to 6 times the chance to

Low quality of interpersonal relationships increase up to 2 times the chance to



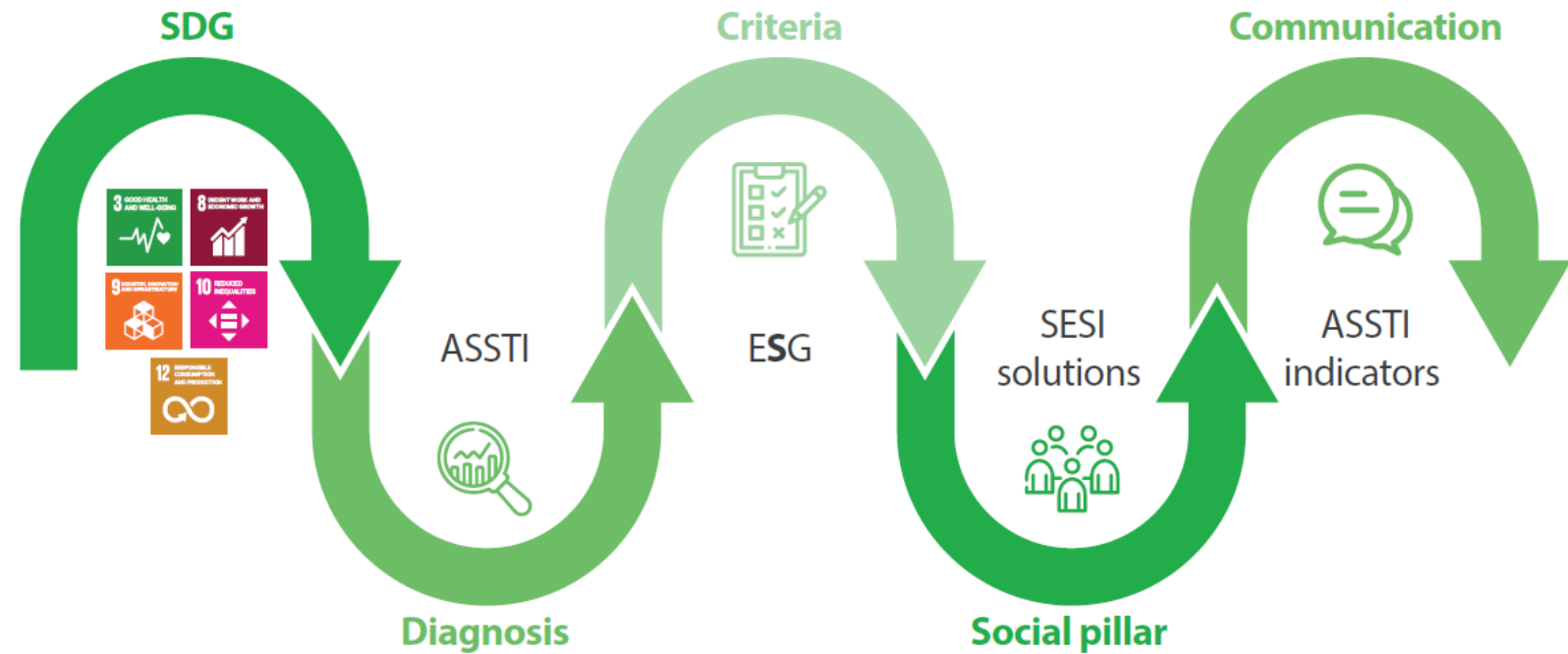
SESI Viva+ Solutions

Mental Health Program: medical and psychological care + access to target content

Occupational Health and Safety Management Program

Well-being program

How to clearly communicate S results in ESG



*ASSTI – SESI Health and Safety Assessment for Industry Workers and Productivity Index



Performance Investment Stock of Exchange

A study carried out with the largest publicly traded companies (USA) showed that, over a 10-year period, those that promote health, safety and well-being performed better on the stock exchange, when compared to those that did not invest.

Increase in shareholders' equity was 20.8%

The logo consists of the letters 'SESII' in a white, outlined, sans-serif font. The background features a complex network of glowing green lines and nodes, resembling a circuit board or a data network, set against a dark green gradient.

Reference in

Occupational Safety and
Health for the Brazilian
Industry

The logo consists of the letters 'SESI' in a white, outlined, sans-serif font. The background features a complex network of glowing green lines and nodes, resembling a circuit board or a data network, set against a dark green gradient.

Innovation Orchestrator

Of Comprehensive Health and Safety for
Brazilian Industry and it`s ecossystems

The logo consists of the letters 'SESI' in a bold, white, sans-serif font, enclosed within a white rectangular border with horizontal lines on the left and right sides. The background features a complex network of glowing green lines and nodes, resembling a circuit board or a data network, set against a dark green gradient.

Brazilian Social Service for Industry

THE FUTURE OF WORKFORCE