



# FEAR OF UNEMPLOYMENT AND LIFE SATISFACTION



National Confederation of Industry  
Brazil  
CNI. THE STRENGTH OF THE BRAZILIAN INDUSTRY

## Fear of unemployment falls by 2.2 points compared to June

The fear of unemployment index edged down by 2.2 points between June and September 2018 to 65.7 points, partly reversing the increase observed between March and June. Despite the decline, the index remains at a high level, up by 16 points from its 49.7-point historical average.

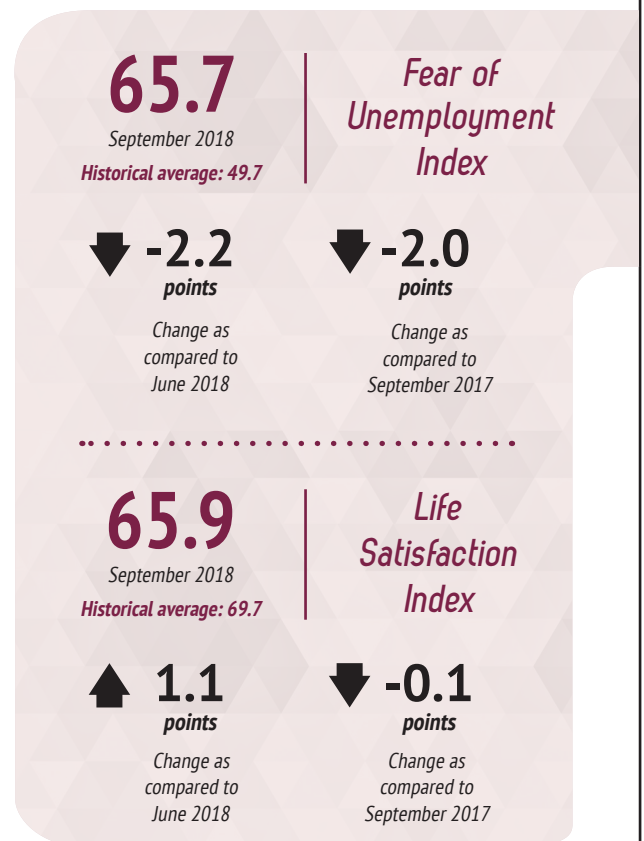
In the Southeast region, the fear of unemployment index dropped by 5.8 points from June to September, more than reversing the 4.8-point increase registered between March and June. The Southeast region has the second-highest fear of unemployment index in the country, with 64.0 points in September.

The Northeast region also shows a 1.0-point drop in fear of unemployment between June and September. However, the decline in this region was not enough to offset the 4.8 increase between March and June 2018. Despite the slowdown, the Northeast region still has the highest fear of unemployment index in Brazil, with 73.1 points.

In the South region, the index increased by 0.8 points between June and September to 62.7 points. The fact that fear of unemployment remains at a high level means that, for the second consecutive time, the index for the South region is higher than that for the North/Midwest region, which stood at 60.9 points.

The North/Midwest region also recorded an increase in September, with the index growing by 2.3 points. The region had been the only one to show a drop in fear of unemployment between March and June. For the second consecutive survey, the fear of unemployment index for the North/Midwest region is the lowest in the country, although it remains at a high level as compared to the period before the economic crisis.

The life satisfaction index grew by 1.1 points during the same period to 65.9 points. The indicator is still down by 3.8 points from its historical average and by 7.9 points from its highest point recorded in the series in September 2010.

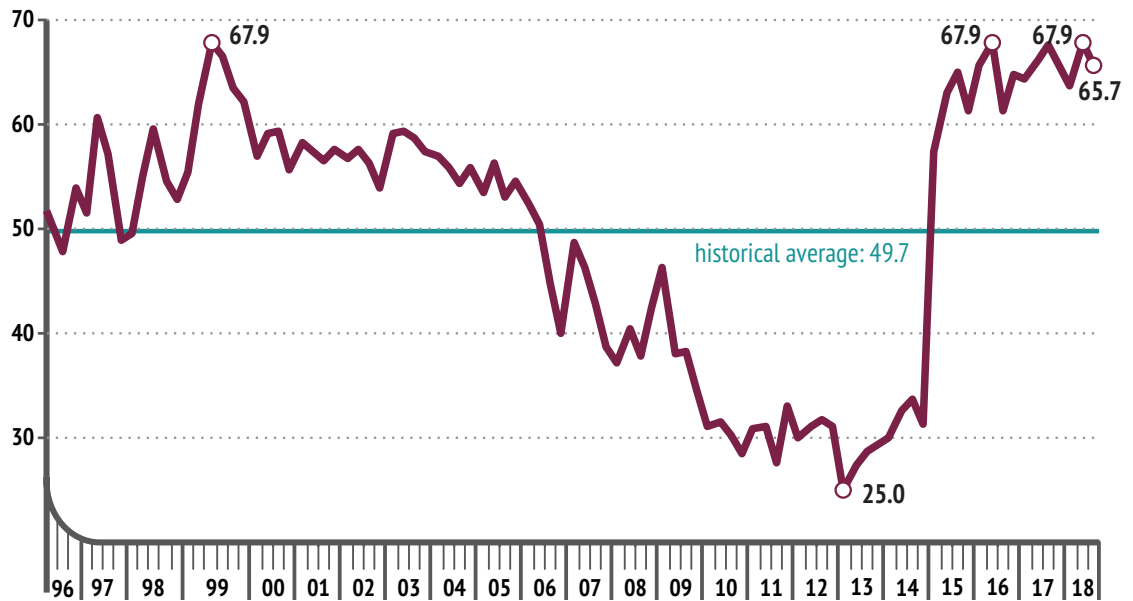


Life satisfaction has increased across all Brazilian regions. The highest increases were observed in the North/Midwest and South regions, with an increase of 2.3 and 2.4 points respectively. In the Northeast region, the life satisfaction index edged up by one point between June and September, while the Southeast region showed the lowest growth: 0.2 points.



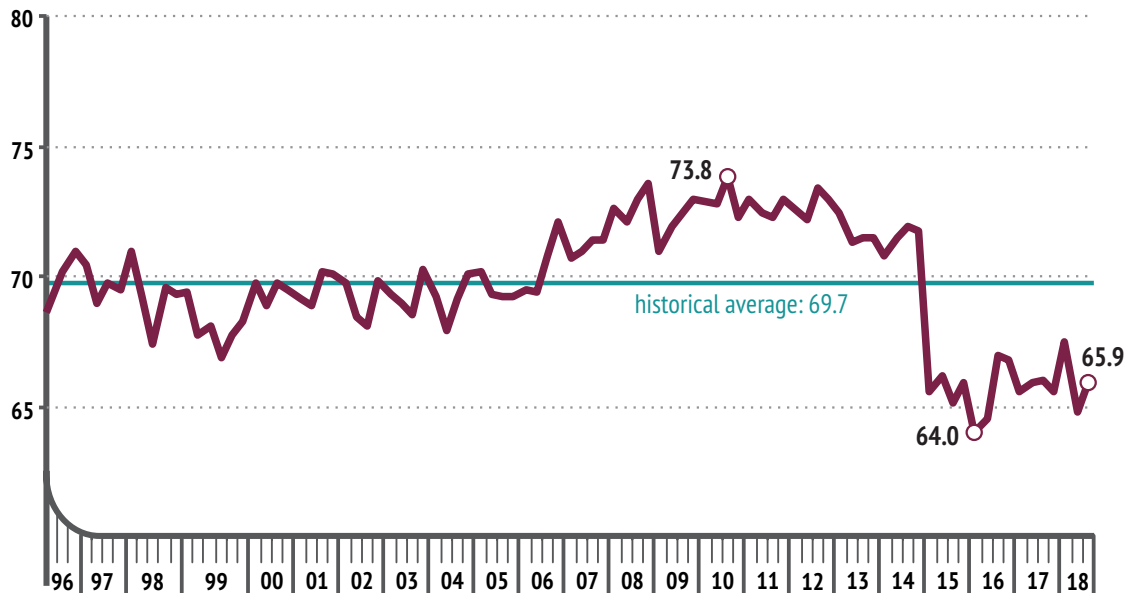
## Fear of Unemployment Index

Diffusion index



## Life Satisfaction Index

Diffusion index



**Methodological note:** The Fear of Unemployment and Life Satisfaction survey is prepared by the National Confederation of Industry based on a national public opinion poll conducted by the IBOPE Inteligência institute.



	Fear of unemployment index			Life satisfaction index		
	Sep/2017	Jun/2018	Sep/2018	Sep/2017	Jun/2018	Sep/2018
Total	67.7	67.9	65.7	66.0	64.8	65.9
<b>GENDER</b>						
Male	62.7	64.5	62.9	66.8	65.9	66.7
Female	72.5	71.1	68.4	65.1	63.8	65.1
<b>AGE</b>						
16 to 24	65.6	70.8	68.6	69.8	68.4	69.6
25 to 34	69.5	66.8	67.0	66.9	67.1	66.4
35 to 44	67.4	68.4	65.8	65.8	64.2	64.4
45 to 54	68.9	66.3	63.1	63.1	62.6	65.1
55 or above	67.1	67.9	64.1	64.2	62.3	64.4
<b>EDUCATION LEVEL</b>						
Up to the 4th grade of elementary school	72.9	72.4	67.1	63.6	63.4	64.6
5th-8th grade of elementary school	70.0	72.2	69.4	65.1	63.6	65.0
Secondary education	67.0	67.3	67.6	66.3	65.0	65.9
Higher education	61.1	60.5	58.1	69.1	67.4	67.7
<b>GEOGRAPHIC REGION</b>						
North and Mid-west	64.3	58.6	60.9	63.0	64.9	67.2
Northeast	71.4	74.1	73.1	66.4	65.0	66.0
Southeast	68.6	69.8	64.0	66.0	65.1	65.3
South	63.1	61.9	62.7	68.3	63.8	66.2
<b>FAMILY INCOME (IN MINIMUM WAGES)</b>						
Over five	51.1	55.2	58.4	70.4	67.4	69.8
Over two up to five	64.9	62.9	61.0	68.7	67.2	68.6
Over one up to two	71.3	71.2	67.1	65.9	65.1	65.8
Up to one	75.2	77.4	73.1	61.7	61.4	60.5
<b>CONDITION OF THE MUNICIPALITY</b>						
Capital	65.6	66.0	64.8	63.4	63.8	64.4
Outskirts of capitals	68.6	73.9	62.6	64.2	65.7	63.2
Country	68.8	67.6	66.7	67.7	65.2	67.1



### Technical specifications

Period in which information was collected for this issue: September 22-24, 2018.

Sample profile: 2000 interviews in 126 municipalities.



### Learn more

For more information on the survey, including previous editions, methodology and data by respondent profile, visit: [www.cni.com.br/e\\_imd-isv](http://www.cni.com.br/e_imd-isv)