

Japan's Approach to Combatting the Novel Coronavirus

September 29, 2020

KEIDANREN

Infections in Japan ①

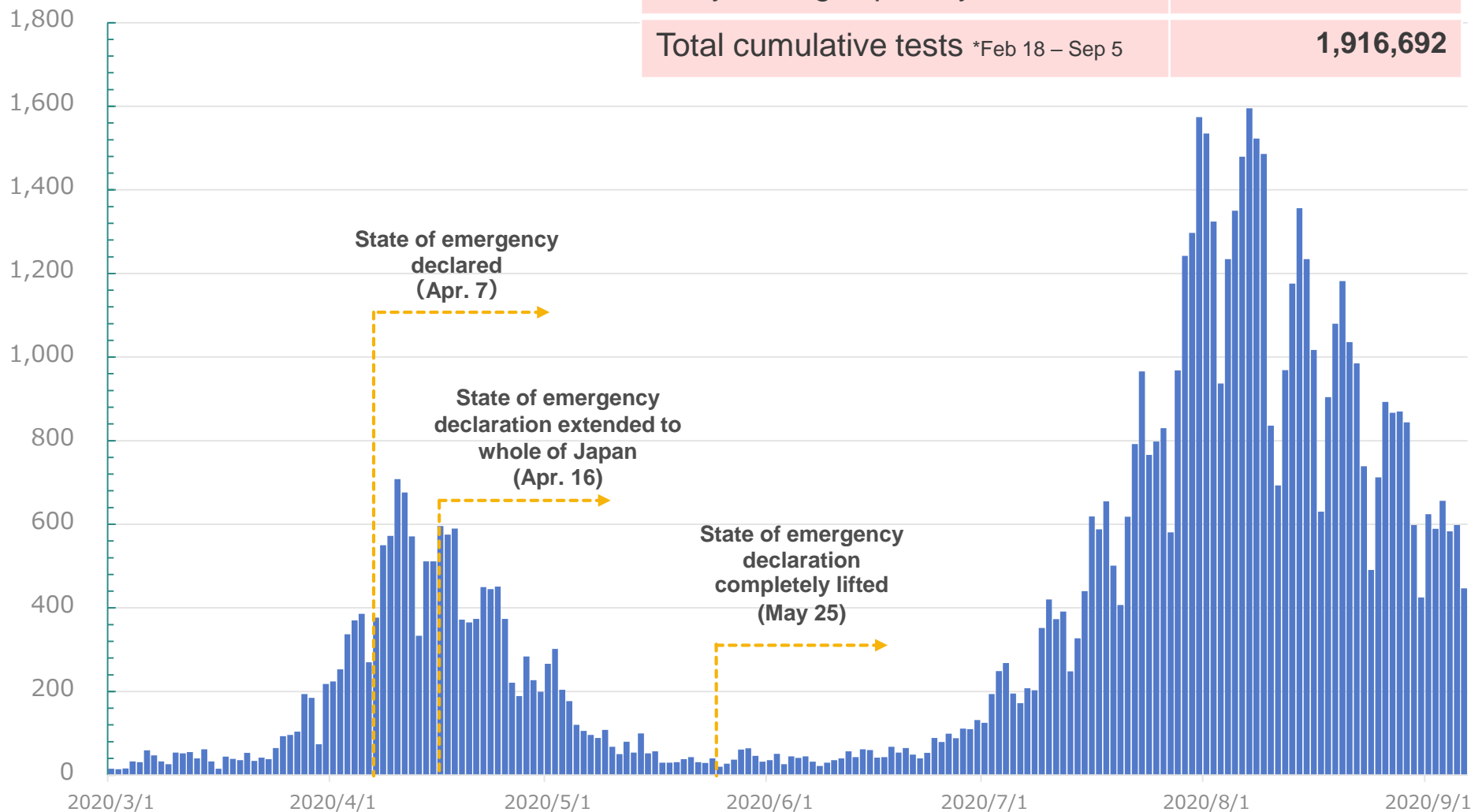
Daily Confirmed New Cases

Daily testing capability *As of Sep 5

62,210 per day

Total cumulative tests *Feb 18 – Sep 5

1,916,692

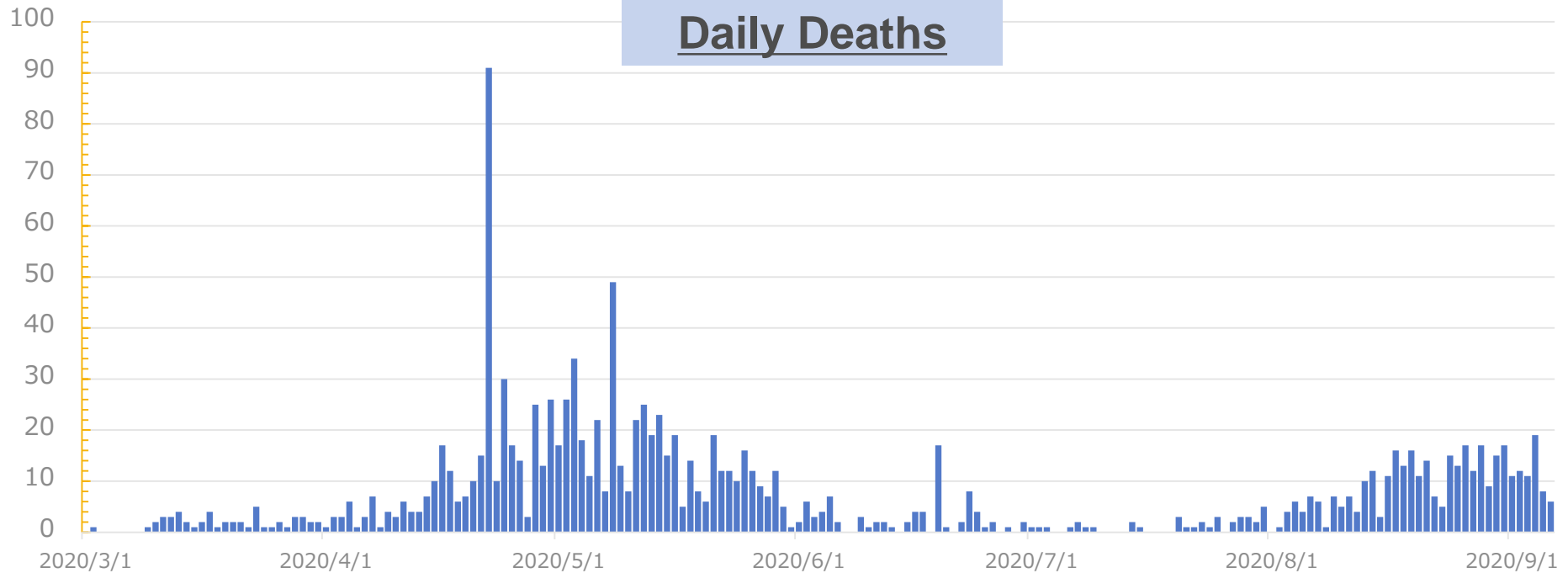


*1 If several days' worth of cases are reported together to the national government by the prefectural governments, those cases are back-posted to their corresponding dates. Figures have been carefully checked for duplication of cases.

*2 Unreported Tokyo cases until May 10 have been added as if they were reported on the date of confirmation.

(Source: Ministry of Health, Labour and Welfare press release, with additions made by Keidanren Secretariat)

Infections in Japan ②



Deaths in various countries and regions per 1 million population (as of Sep 5)

UK	622.9
Brazil	547.8
USA	541.2
Mexico	479.3
India	42.5

Indonesia	25.0
Hong Kong	10.2
Japan	9.4
South Korea	6.0
Singapore	4.8

Malaysia	4.0
China	3.4
Thailand	0.8
Vietnam	0.3
Taiwan	0.3

Japanese Government's Response ①

■ State of emergency declaration issued (Apr 7 – May 25)

⇒ Request to stay home, request for restrictions on the use of facilities and holding of events, request for measures to prevent virus spread, e.g. wearing of masks

■ Economic measures implemented (234 trillion Japanese Yen)

⇒ Maintaining employment, continuation of business, household financial support, regional development, etc.

■ COVID-19 contract-tracing app (COCOA) launched, download encouraged



Japanese Government's Response ②

(Restriction of Cross-border Travel)

- Refusal of entry in principle of foreign nationals from many countries/regions (people entering Japan are required to quarantine for 14 days, among other measures).
- Entry restrictions being eased in stages for certain countries/regions.



Currently negotiating with the following countries/regions

Vietnam	China
Thailand	Hong Kong
Australia	Macau
New Zealand	Malaysia
Cambodia	Myanmar
Singapore	Mongolia
South Korea	Laos
Brunei	Taiwan



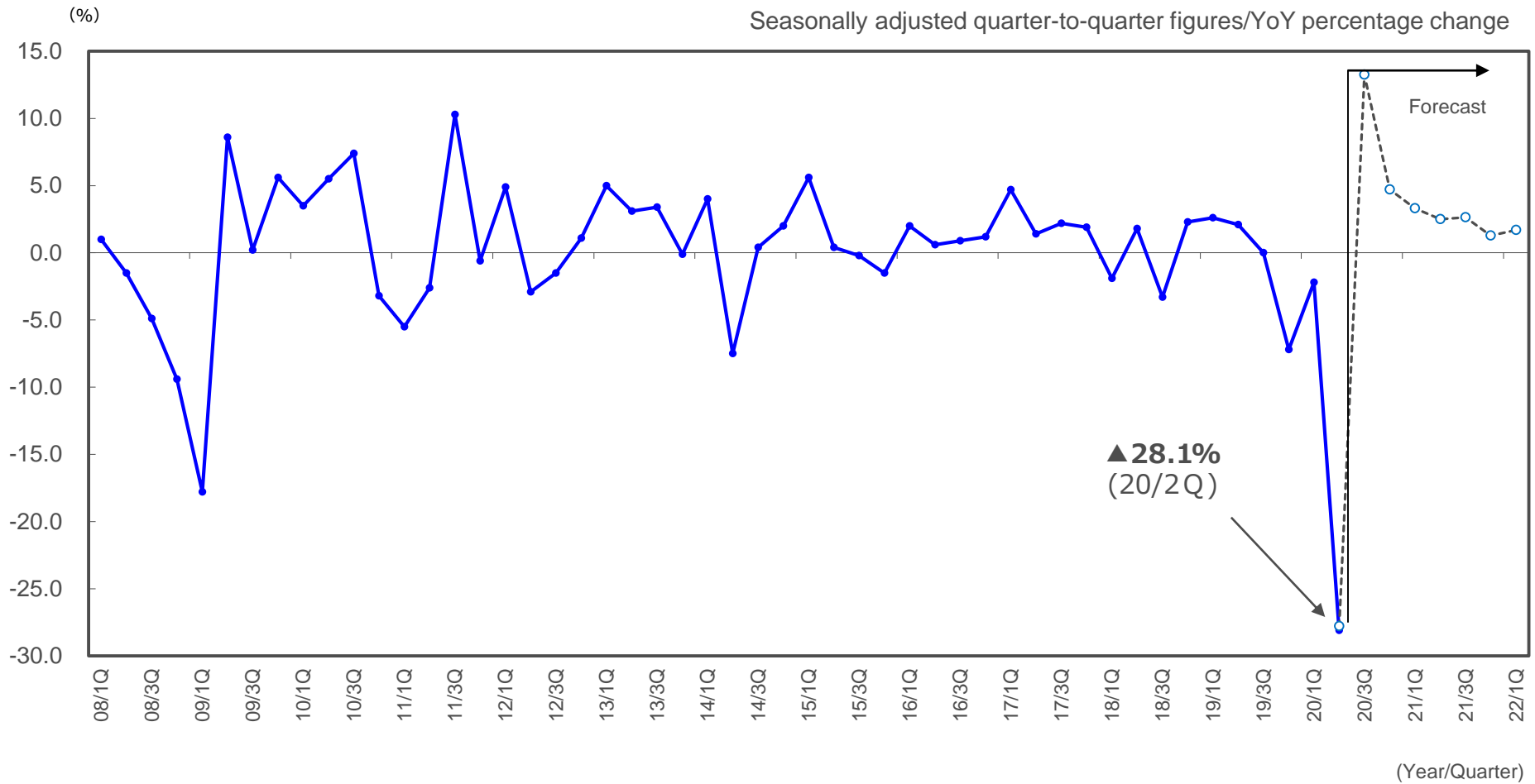
Progress made in negotiations with the following countries/regions

- ◆ Vietnam and Thailand
Started processing Residence Track entry applications on July 29
- ◆ Malaysia, Cambodia, Laos, Myanmar, and Taiwan
Started processing Residence Track entry applications on Sep 8
- ◆ Singapore
Started processing Business Track entry applications on Sep 18

Japanese Government's Phased Measures toward Resuming International Travel

- ① Business Track: Scheme that allows travelers to conduct business activities in limited areas even during the 14-day quarantine period after entering Japan or the other country/region
- ② Residence Track: Scheme that requires 14 days quarantine at home or elsewhere after entering Japan or the other country/region

Japan's Real GDP Growth (Annual)



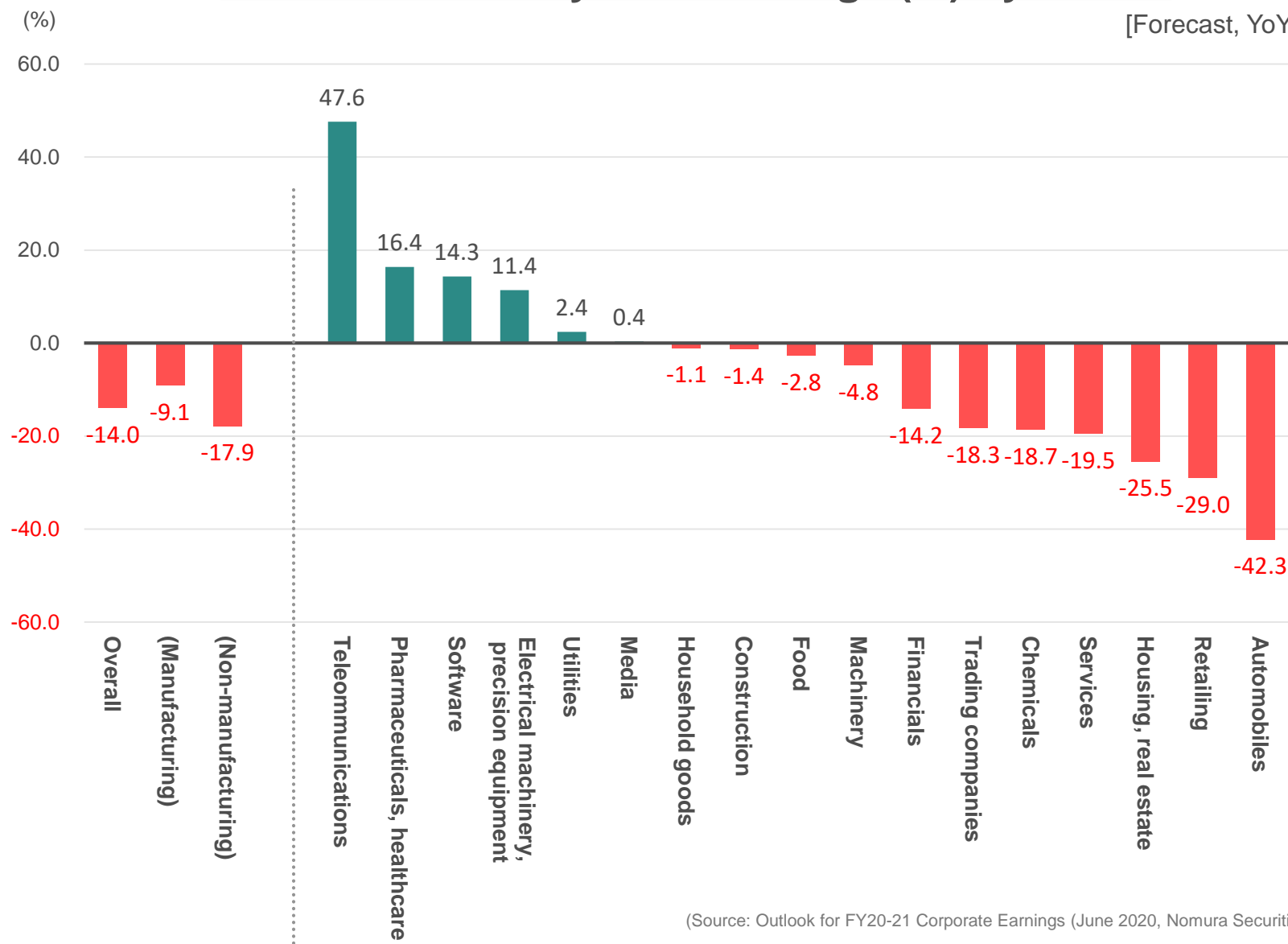
* Forecasts from ESP Forecast Survey (published Aug. 13)

(Source: Preliminary Quarterly Estimates of GDP April-June 2020, Cabinet Office)

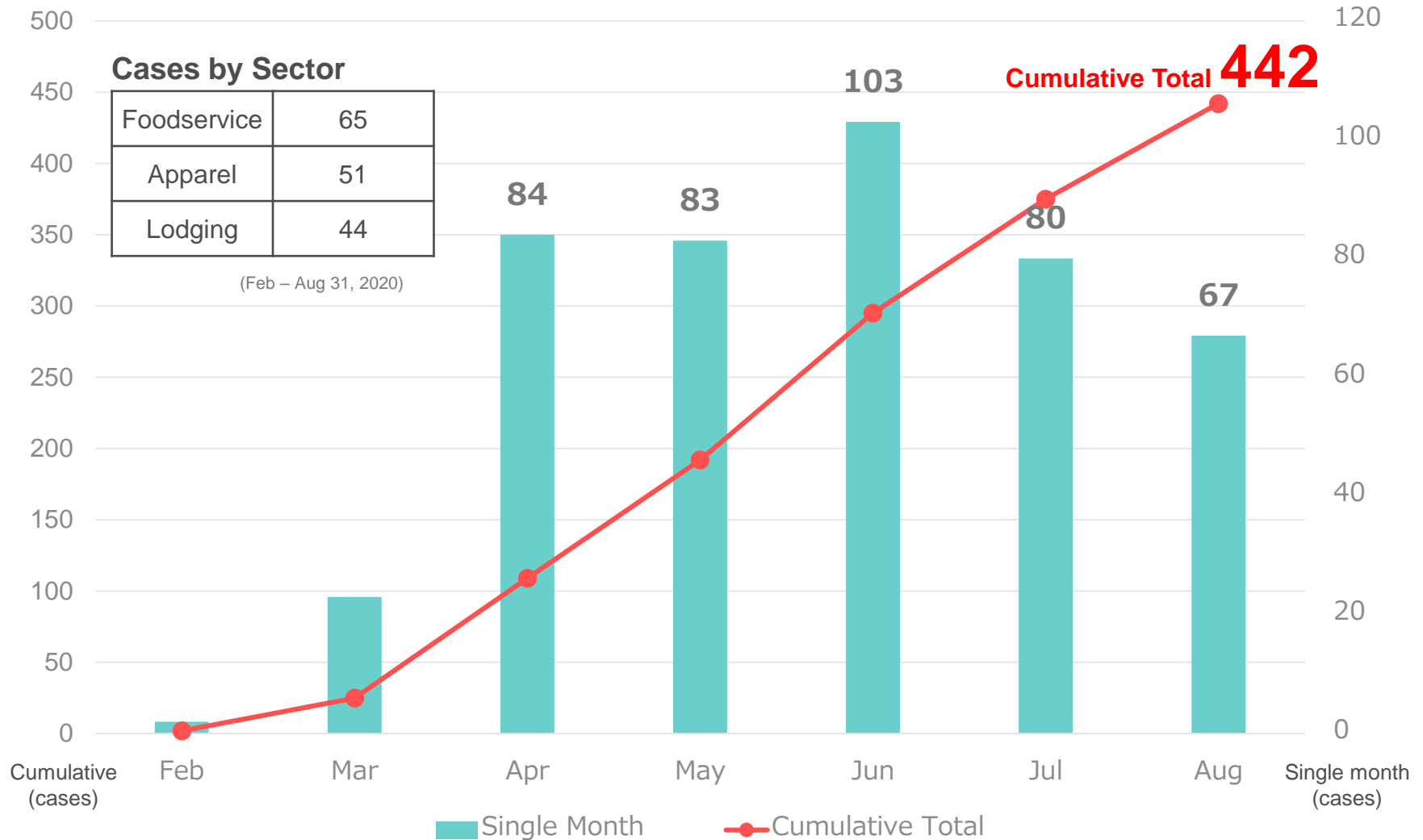
Forecast Impact on Japanese Corporate Performance

FY2020 Ordinary Profit Change (%) by Sector

[Forecast, YoY change]



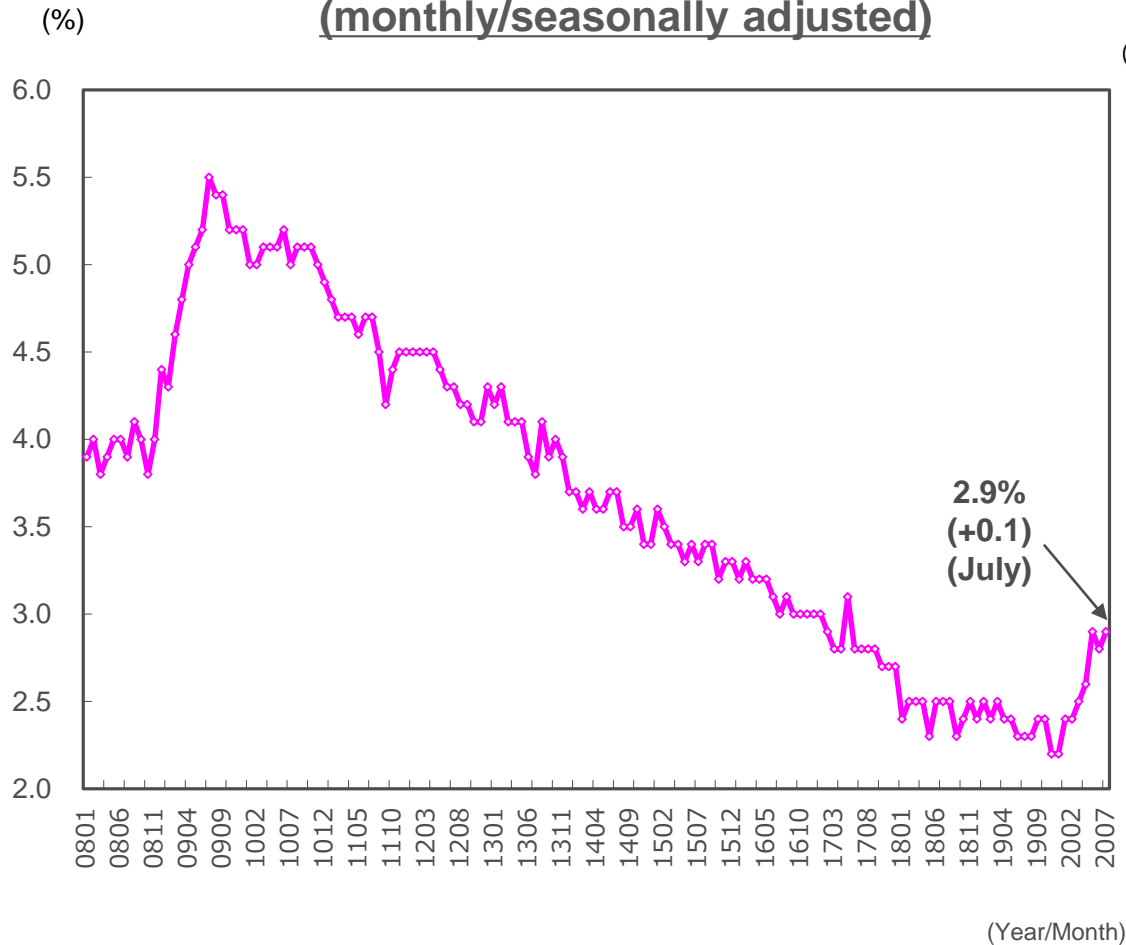
Number of Business Failures of Japanese Companies Connected to COVID-19



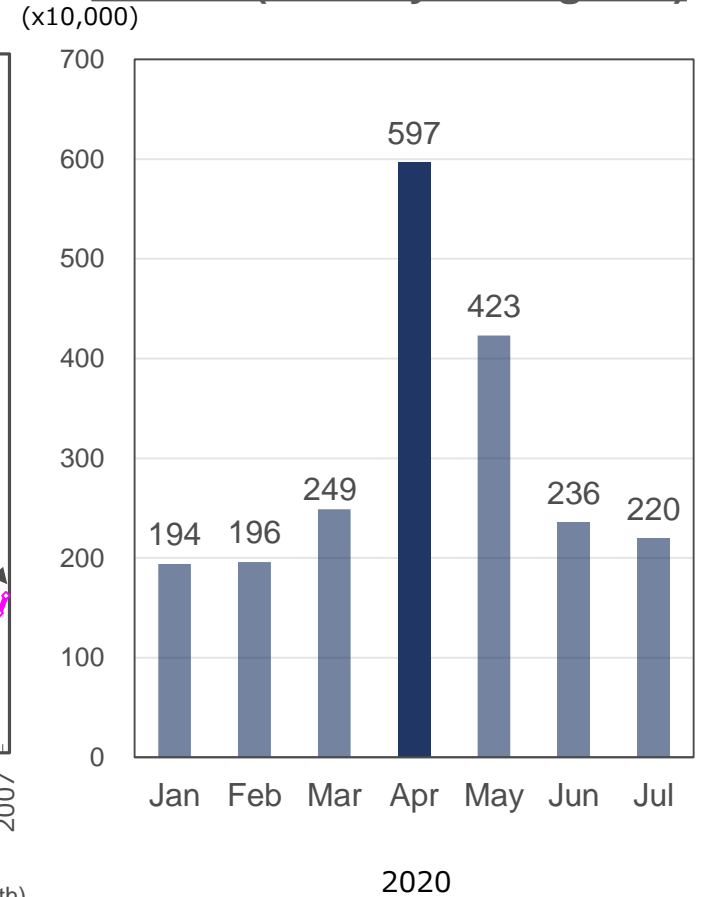
(Source: Tokyo Shoko Research, Ltd. Tally of businesses that collapsed with liabilities of ¥10 million or more)

Japanese Unemployment Figures

**Total unemployment rate
(monthly/seasonally adjusted)**



**Number of Employed person not
at work (monthly/raw figures)**

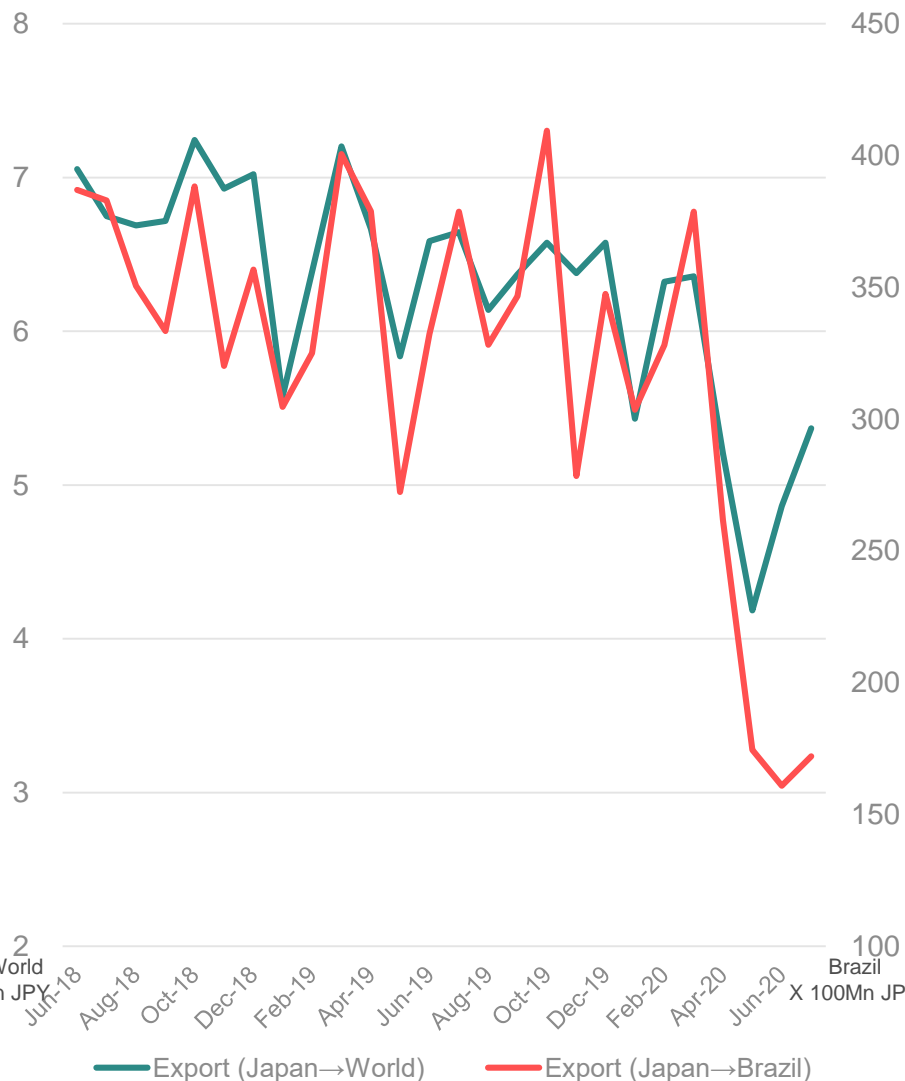


(Source: *Unemployment Referrals for General Workers*, Ministry of Health, Labour and Welfare, *Labor Force Survey*, Ministry of Internal Affairs and Communications)

(Source: *Labor Force Survey*, Ministry of Internal Affairs and Communications)

Imports and Exports (Japan↔World, Japan↔Brazil)

Value of Japanese Exports



Value of Japanese Imports



(Source: Ministry of Finance Trade Statistics)

Keidanren's Response

- Released Urgent Proposal to Counter Coronavirus Disease (COVID-19) Pandemic in March, which reflected the Japanese Government's economic measures.
- Also obtained members' cooperation in aggressively promoting various responses.

(E.g. 1) Cooperation in securing medical supplies

- ✓ Called on member companies to donate medical supplies.
- ✓ Delivered to medical institutions through Japanese government, etc.

Outcome of Call for Donations

① Advanced-function masks

Total **1,276,572** masks
(From 175 companies)



② PPE, e.g. medical gown alternatives

Total **92,180** items
(From 73 companies)



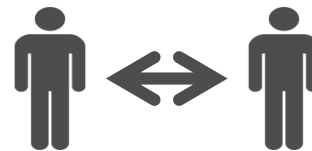
(E.g. 2) Establishment of guidelines for preventing infection

- ✓ Released Guidelines for Preventing the Spread of Novel Coronavirus Disease (COVID-19) in May with aim of balancing prevention of the spread of COVID-19 with the resumption of economic activity

Specific examples of prevention measures

Social distancing

(2 meters as much as possible)



Frequent cleaning and disinfecting of shared facilities



Ease commuting congestion through remote work, staggered start times, etc.



Promotion of Digitization in Anticipation of Post-COVID-19 Era

- Positive signs of use of digital technologies during the pandemic, including in work styles, education, medical care, and government and private sector practices.
- In anticipation of post-corona times, we will promote digital transformation (DX) in society as a whole to realize Society 5.0, a resilient, sustainable, and human-centric future society.

Work styles: Remote work

Spread rapidly during pandemic. Potential for major changes in the way people work.



Education: Edtech

[Future required action]
Full-scale implementation of remote education through measures such as one device per student for educational purposes



Medical: Online consultations

[Future required action]
Continuation of online consultations, including initial consults, and drug guidance, expansion of medical institutions that can offer online consultations



Government/private sector practices

Increasing momentum for drastic re-examination of general principles regarding paper, seals, and in-person interactions

